



National Research
Council Canada

Conseil national de
recherches Canada

Canada

CODES CANADA



Significant Changes

National Building Code
Part 9—housing

Speakers: Corey Carson, Greg Fairthorne, Technical
Advisor



Public Review Comments on Proposed Changes



PR	NBC		Part 9	
	PCFs	Comments	PCFs	Comments
2016	0	0	0	0
2017	75	769	9	74
2018	119	1020	31	341
2019	43	723	25	380
2020	73	1359	22	421

Significant Change Outline

1. Significant changes approved for publication
2. Significant changes submitted for CCBFC decision
3. Significant changes still to be addressed

Approved Significant Changes

1. Spatial separation
2. Fire safety
3. Health and safety
4. Soft-conversion

Significant Changes Awaiting CCBFC Approval

1. Safety Glazing
2. Insulated Concrete Forms (ICF)
3. Stairs, Ramps, Handrails, and Guards
4. Sound Pressure of Alarms

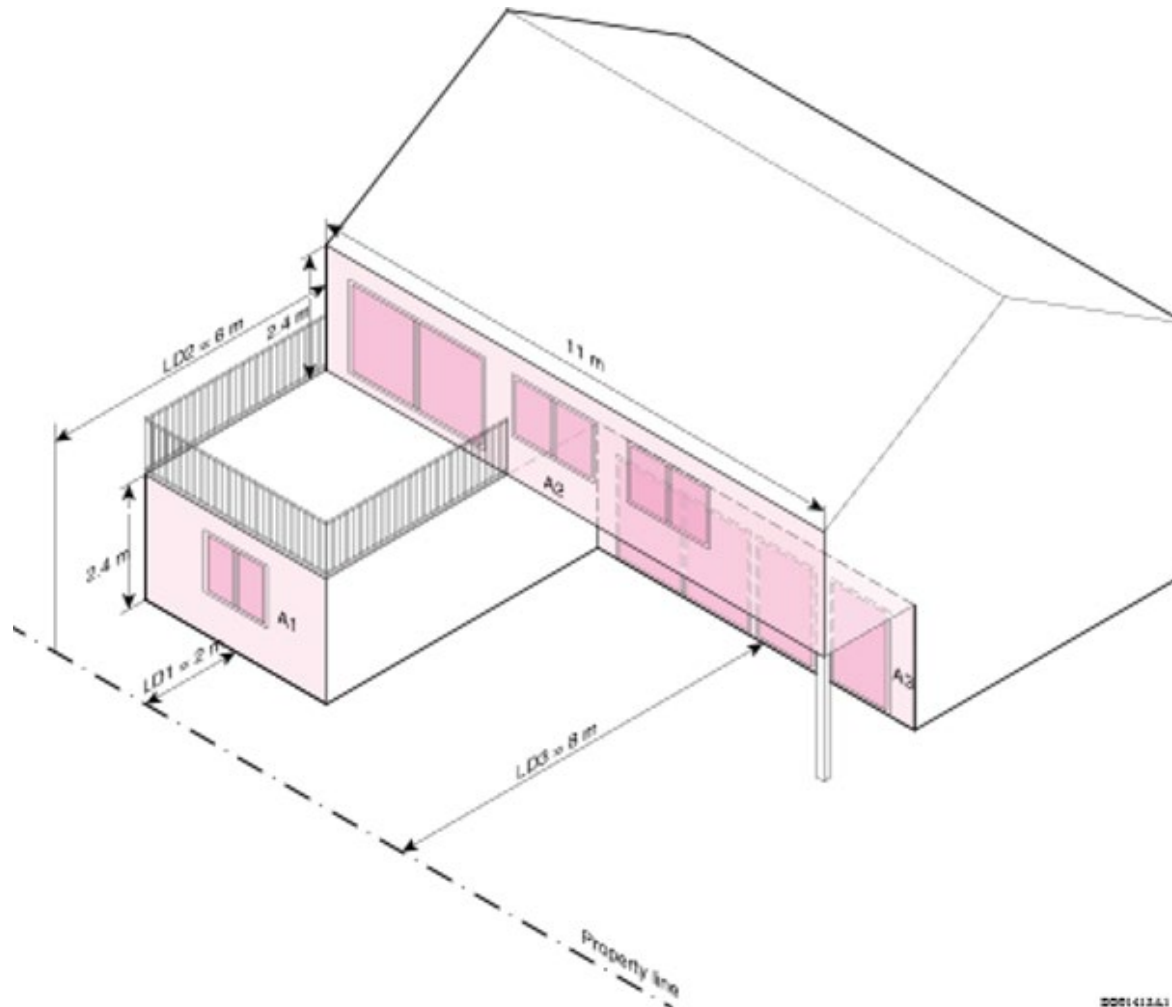
Significant Changes Still to be Addressed

1. Lateral Loads
2. Location of Exhaust Discharge
3. Stairs, Handrails and Guards (1 PCF)
4. Grab Bars in Bathtubs and showers
5. ICF Construction (remaining PCFs)
6. Update to Referenced Documents
7. Energy Efficiency
8. Accessibility
9. Penetrations (Part 9)

Approved Significant Changes Outline

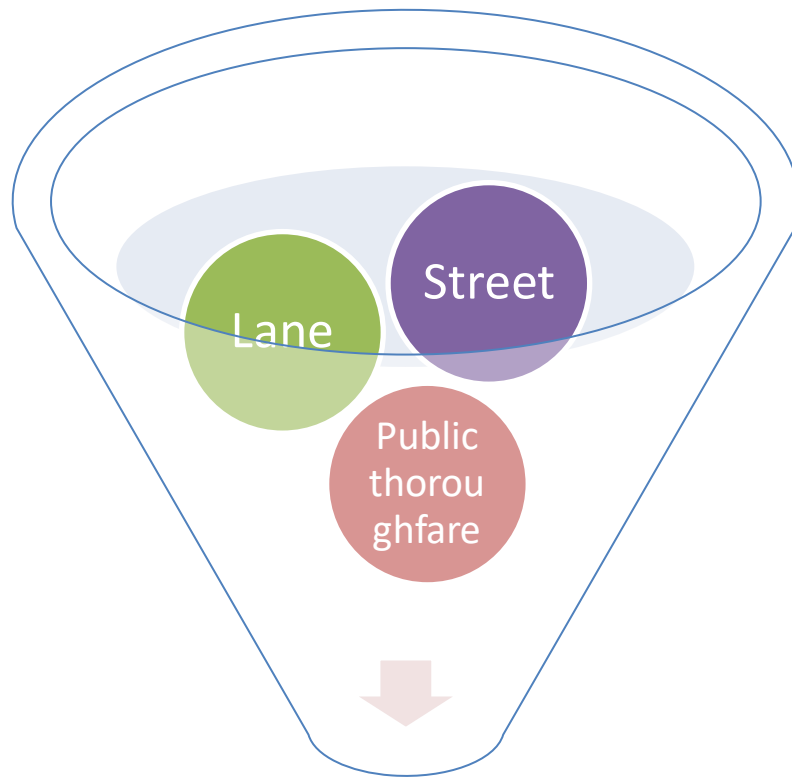
1. Spatial separation
2. Fire safety
3. Health and safety
4. Soft-conversion

Area of glazed openings for houses



000141241

Public way vs. public thoroughfare



Public way



Approved Significant Changes Outline

1. Spatial separation
2. Fire safety
3. Health and safety
4. Soft-conversion

Interconnected smoke alarms



Approved Significant Changes Outline

1. Spatial separation
2. Fire safety
3. Health and safety
4. Soft-conversion

Asbestos

- Remove or qualify any reference to asbestos



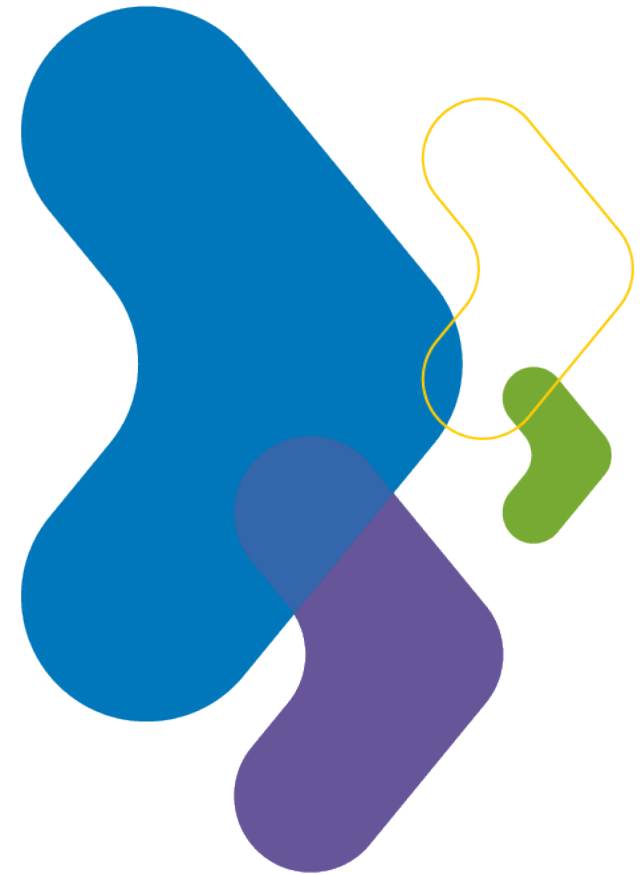
Protection of windows

- Openable windows in dwelling units
- Guards not always required
- Intent → Small Children



Protection of windows

- More windows protected
- Tools or special knowledge
- 100 mm



Home-type care occupancy

- Affordable accommodations for people who need care



Home-type care occupancy



Group	Division	Name	Part
B	1	<i>Detention occupancies</i>	3
B	2	<i>Treatment occupancies</i>	3
B	3	<i>Care occupancies</i>	3
B	4	<i>Home-type care occupancies</i>	9

NEW!

Outline

1. Spatial separation
2. Fire safety
3. Health and safety
4. **Soft-conversion**

Tolerances and conversion



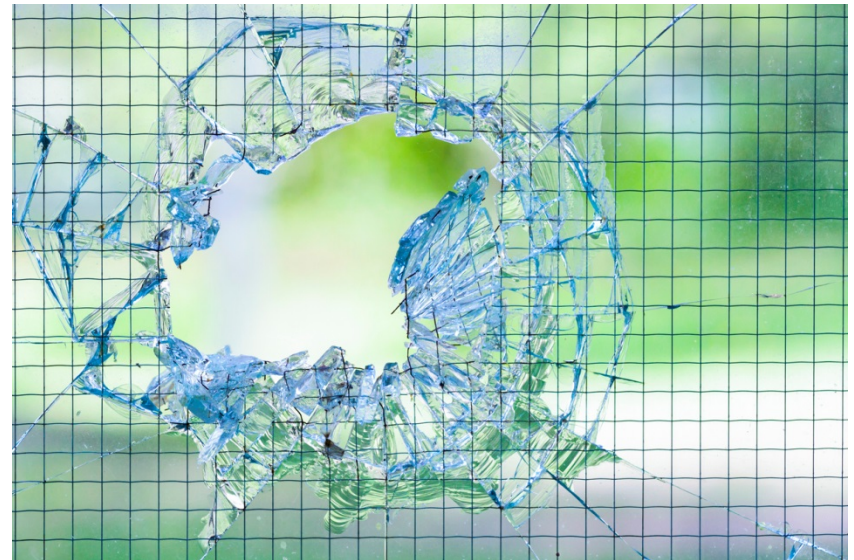
Significant Changes Awaiting CCBFC Approval

1. Safety Glazing
2. ICF
3. Stairs, Ramps, Handrails, and Guards
4. Sound Pressure of Alarms

Significant Changes Awaiting CCBFC Approval

1. Safety Glazing
2. ICF
3. Stairs, Ramps, Handrails, and Guards
4. Sound Pressure of Alarms

Safety Glazing



Significant Changes Awaiting CCBFC Approval

1. Safety Glazing
2. ICF
3. Stairs, Ramps, Handrails, and Guards
4. Sound Pressure of Alarms

ICF construction



Significant Changes Awaiting CCBFC Approval

1. Safety Glazing
2. ICF
3. Stairs, Ramps, Handrails, and Guards
4. Sound Pressure of Alarms

Open risers

- New provisions only allow open risers for:
 - Fire escape stairs
 - Stairs for maintenance and service rooms
 - Stairs that serve industrial occupancies other than storage garages
 - Interior and exterior stairs that serve not more than one dwelling unit and a house with secondary suite



Required Landings

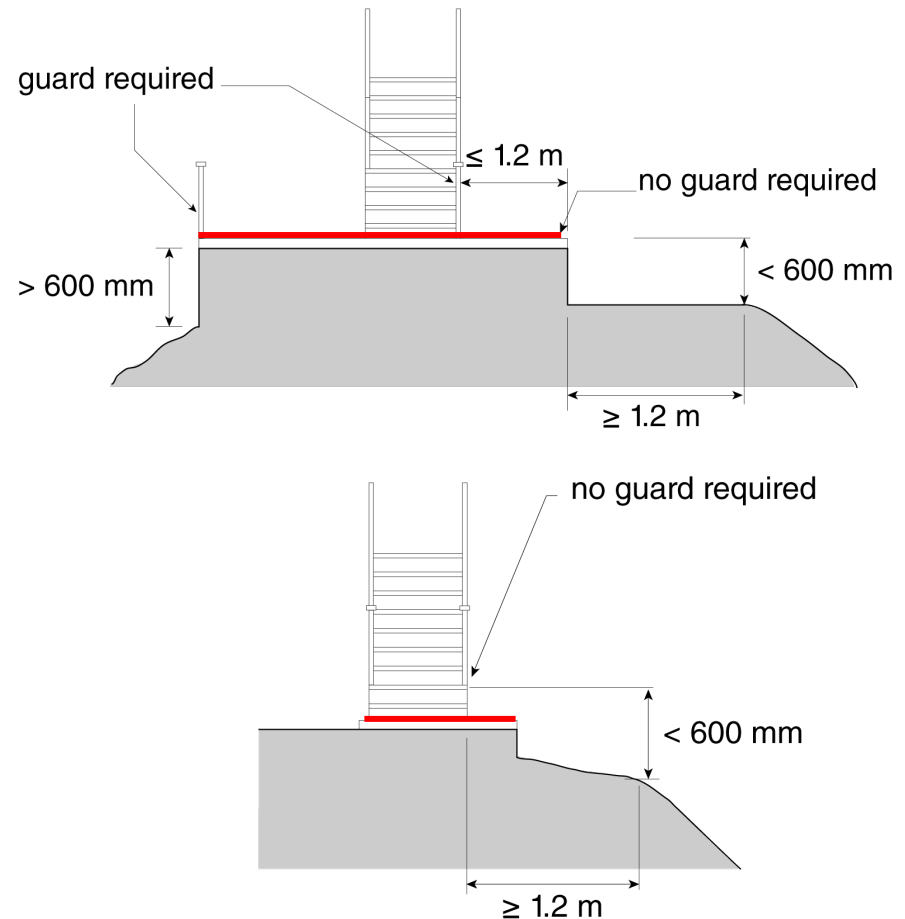
- The proposed change adds an explanatory note for the purpose of the door swinging away from the stairs.



Protection of Raised Walking Surfaces

➤ The proposed change clarifies that

- raised surfaces need to be protected where there is a difference in elevation of more than 600 mm between the walking surface and the adjacent surface within 1.2 m.



Significant Changes Awaiting CCBFC Approval

1. Safety Glazing
2. ICF
3. Stairs, Ramps, Handrails, and Guards
4. Sound Pressure of Alarms

Sound pressure of alarms

- Harmonization P3 and P9
- Smoke detector in lieu of smoke alarms
 - Same sound pressure level as smoke alarms
 - 75 to 110 dBA



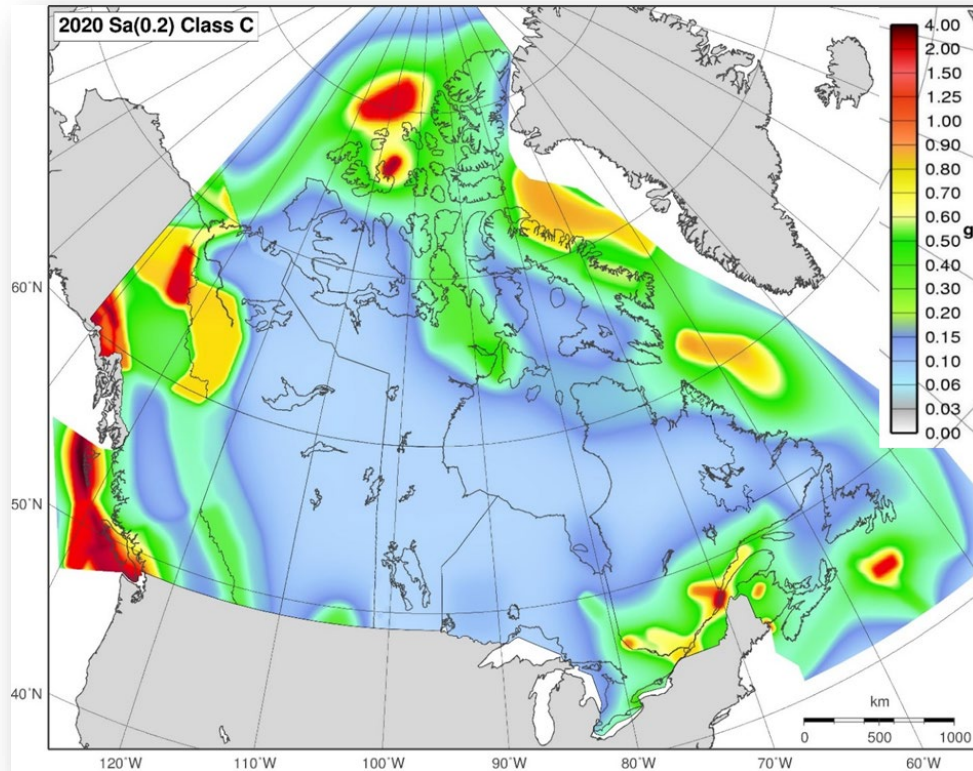
Significant Changes Still to be Addressed

1. Lateral Loads
2. Location of Exhaust Discharge
3. Stairs, Handrails and Guards (1 PCF)
4. Grab Bars in Bathtubs and showers
5. ICF Construction (remaining PCFs)
6. Update to Referenced Documents
7. Energy Efficiency
8. Accessibility
9. Penetrations (Part 9)

Significant Changes Still to be Addressed

1. Lateral Loads
2. Location of Exhaust Discharge
3. Stairs, Handrails and Guards (1 PCF)
4. Grab Bars in Bathtubs and showers
5. ICF Construction (remaining PCFs)
6. Update to Referenced Documents
7. Energy Efficiency
8. Accessibility
9. Penetrations (Part 9)

Lateral Loads



Significant Changes Still to be Addressed

1. Lateral Loads
2. Location of Exhaust Discharge
3. Stairs, Handrails and Guards (1 PCF)
4. Grab Bars in Bathtubs and showers
5. ICF Construction (3 remaining PCFs)
6. Update to Referenced Documents
7. Energy Efficiency
8. Accessibility
9. Penetrations (Part 9)

Location of exhaust discharge



Significant Changes Still to be Addressed

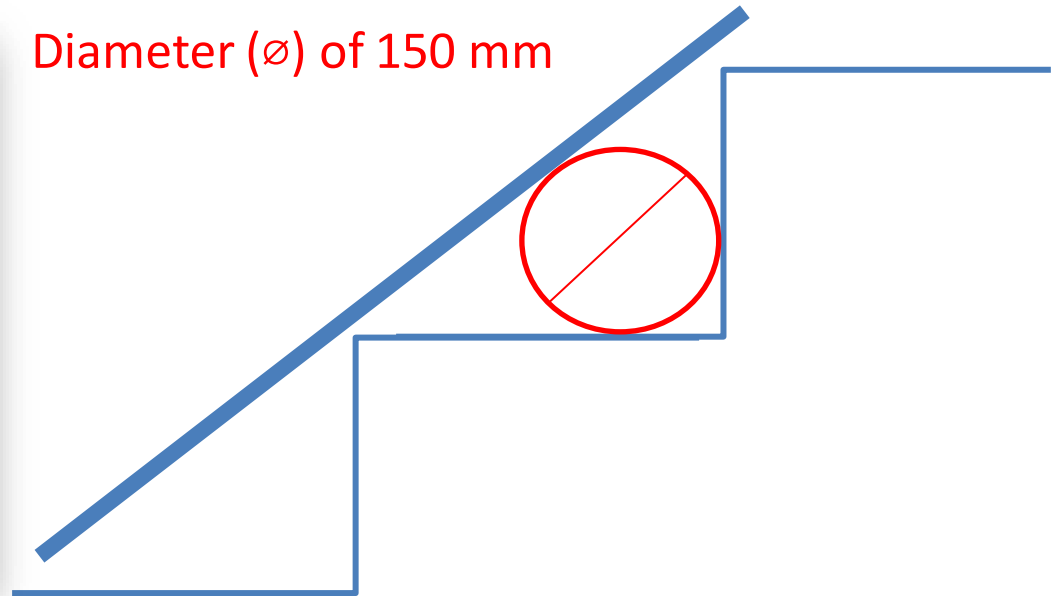
1. Lateral Loads
2. Location of Exhaust Discharge
3. Stairs, Handrails and Guards (1 PCF)
4. Grab Bars in Bathtubs and showers
5. ICF Construction (remaining PCFs)
6. Update to Referenced Documents
7. Energy Efficiency
8. Accessibility
9. Penetrations (Part 9)

Open stringers

- This proposed change sets the limit for the triangular openings formed by the riser, tread and bottom element of a required guard.



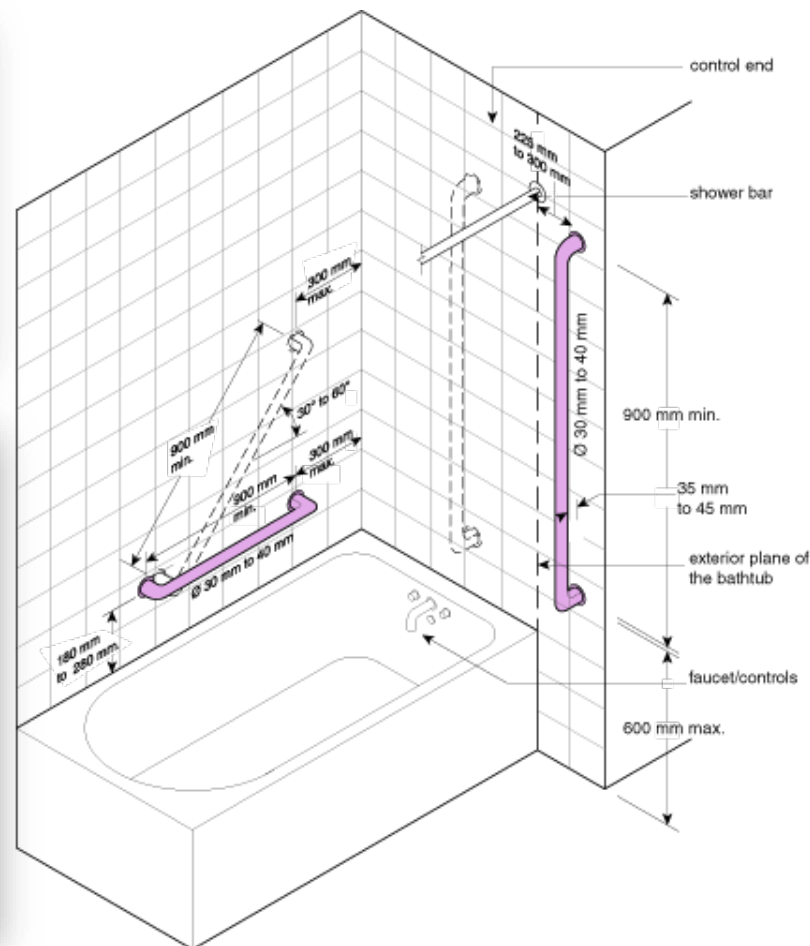
Diameter (Ø) of 150 mm



Significant Changes Still to be Addressed

1. Lateral Loads
2. Location of Exhaust Discharge
3. Stairs, Handrails and Guards (1 PCF1)
- 4. Grab Bars in Bathtubs and showers**
5. ICF Construction (3 remaining PCFs)
6. Update to Referenced Documents
7. Energy Efficiency
8. Accessibility
9. Penetrations (Part 9)

Grab bars in bathtubs and showers



EQ02785A1

Significant Changes Still to be Addressed

1. Lateral Loads
2. Location of Exhaust Discharge
3. Stairs, Handrails and Guards (1 PCF)
4. Grab Bars in Bathtubs and showers
5. ICF Construction (3 remaining PCFs)
6. Update to Referenced Documents
7. Energy Efficiency
8. Accessibility
9. Penetrations (Part 9)

ICF construction



Significant Changes Still to be Addressed

1. Lateral Loads
2. Location of Exhaust Discharge
3. Stairs, Handrails and Guards (1 PCF)
4. Grab Bars in Bathtubs and showers
5. ICF Construction (3 remaining PCFs)
- 6. Update to Referenced Documents**
7. Energy Efficiency
8. Accessibility
9. Penetrations (Part 9)

Update to Referenced Documents

- Over 130 reference standard updates related to Part 9 over 2 ½ years.
- Standing Committee on Housing and Small Buildings refers review to working groups on specific disciplines for a decision.

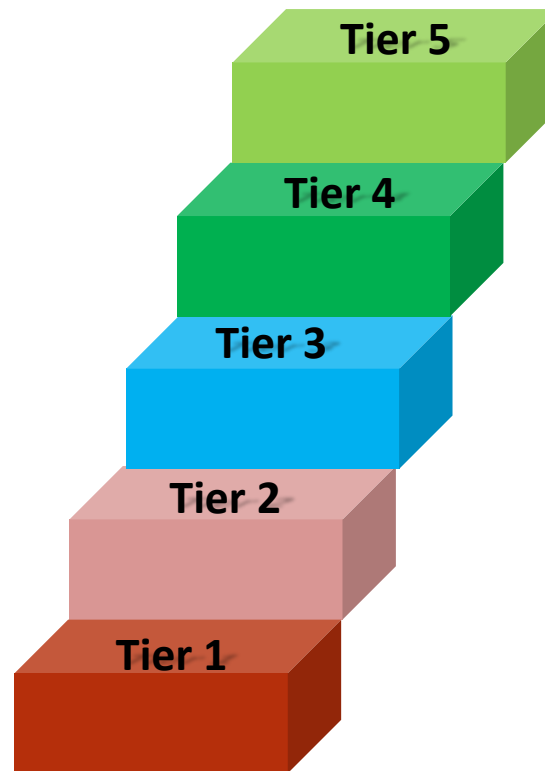


Significant Changes Still to be Addressed

1. Lateral Loads
2. Location of Exhaust Discharge
3. Stairs, Handrails and Guards (1 PCF)
4. Grab Bars in Bathtubs and showers
5. ICF Construction (remaining PCFs)
6. Update to Referenced Documents
7. Energy Efficiency
8. Accessibility
9. Penetrations (Part 9)

Energy Efficiency: Tiered performance requirements

➤ NBC Section 9.36.



Energy Efficiency: Tiered performance requirements

NBC Subsection 9.36.7.

- **Prescriptive tier 2**

NBC Subsection 9.36.8.

- **Airtightness levels**

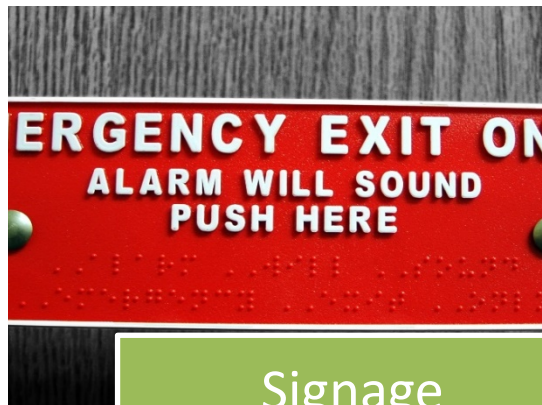
Significant Changes Still to be Addressed

1. Lateral Loads
2. Location of Exhaust Discharge
3. Stairs, Handrails and Guards (1 PCF)
4. Grab Bars in Bathtubs and showers
5. ICF Construction (3 remaining PCFs)
6. Update to Referenced Documents
7. Energy
- 8. Accessibility**
9. Penetrations (Part 9)

Accessibility in the NBC



Plumbing Facilities



Signage



Entrances



Elevators

Significant Changes Still to be Addressed

1. Lateral Loads
2. Location of Exhaust Discharge
3. Stairs, Handrails and Guards (1 PCF)
4. Grab Bars
5. ICF Construction (3 remaining PCFs)
6. Update to Referenced Documents
7. Energy
8. Accessibility
9. Penetrations (Part 9)

Penetrations Through Fire Separations (Part 9)

- This proposed change
 - aligns provisions on penetrations through fire separations with proposed changes for Part 3.
 - aligns with industry practice.



Thank you

CONTACT

NRC-CNRC

1200 Montreal Rd
Ottawa ON
K1A 0R7